

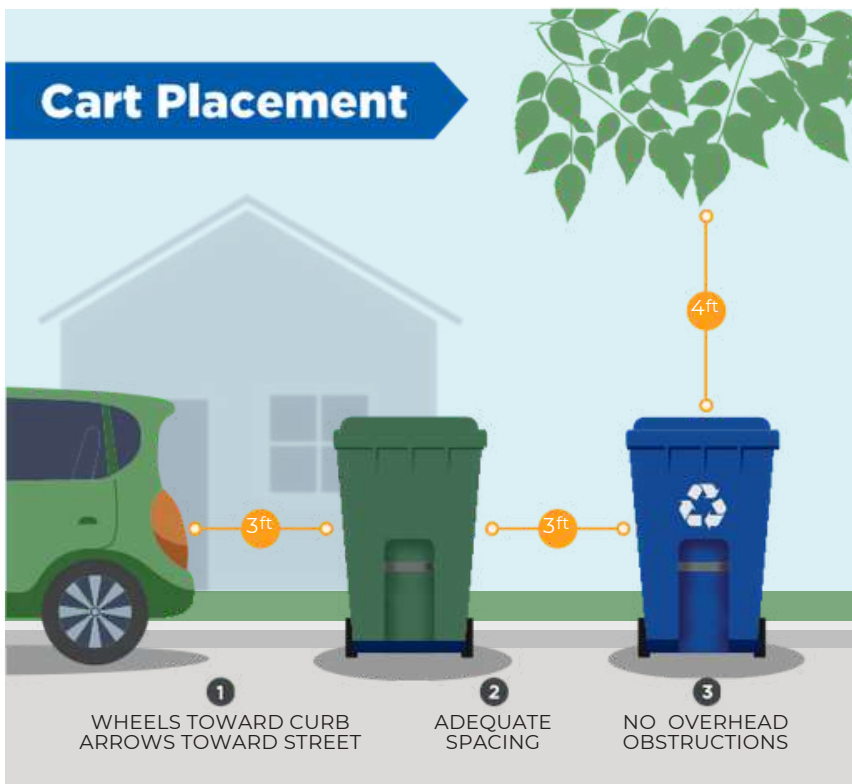
WE'RE ON A ROLL

City of Sterling Heights, say hello to your new refuse cart!

On your regularly scheduled collection day, on or after May 1, 2024, you will see friendly new faces providing you with exceptional collection services. Headquartered in Macomb County, Priority Waste was chosen to be your new residential waste, recycling and yard waste collection provider. You will soon see the Priority difference which includes smiling crew members, bright yellow new trucks, and a company focused on keeping Sterling Heights clean and safe!

Your collection day will remain the same, and we recommend having your materials at the curb any time after 1 p.m. the day before your service.

Check out PriorityWaste.com for updates about your service, the company, and a digital copy of this brochure.



New Cart Instructions

1. **Place at curb with the lid opening facing toward the street.**
2. **Please keep lid closed if possible.**
3. **Place carts at least 3 feet away from each other.**
4. **The automated collection process will put the cart back in close proximity to where the cart originated. Carts should not be placed close to vehicles, mailboxes, and landscaping/yard decorations.**

Scan for more information



WE'RE ON A ROLL

PRIORITY IS EXCITED TO PARTNER WITH THE CITY OF STERLING HEIGHTS

Curbside Pick-up Times

Your service day is coming up!



Have your garbage and recycling carts out by the curb by:
7:00 AM



City Council

Mayor	Michael C. Taylor
Mayor Pro Tem	Liz Sierawski
Councilwoman	Deanna Koski
Councilman	Michael V. Radtke Jr.
Councilwoman	Maria G. Schmidt
Councilman	Henry Yanez
Councilwoman	Barbara A. Ziarko

City Manager	Mark D. Vanderpool
Public Works Director	Michael Moore

Yard Waste Collection

- Yard waste will only be collected in brown paper bags, a brown yard waste cart purchased from Priority Waste or a former dark green refuse cart that has been labeled with a compost sticker on both sides and top of lid.
- Weekly collection starts April 1 and ends the second week of December.
- Acceptable Yard Waste: grass clippings, leaves, shrubs, and brush trimmings.
- Items must be under 6 inches in diameter, bundled and tied, no longer than 4 feet in length.
- Unacceptable Yard Waste: sod, pet waste, dead animals, dirt, rocks, root balls, oversized branches, plastics, logs, bags full of mulch.

Refuse Collection

- Now that you have received your new green refuse cart, material must be contained inside the cart to be collected.
- Additional bags outside the cart will not be collected.
- All material placed inside the refuse cart must still be bagged to prevent litter while servicing.
- Bulk items will still be collected as normal. They include But are not limited to: appliances, furniture, wood under 4 feet & bundled, and mattresses.
- Bulk items do not include move outs, evictions, or remodels.
- For a detailed list, please visit www.sterlingheights.gov/onaroll or scan the QR code here.



FREQUENTLY ASKED QUESTIONS

I HAVE A REFUSE CAN ALREADY, CAN I JUST CONTINUE TO USE THAT CAN?

A new green refuse cart will be delivered to your home. This cart should be your primary cart.

CAN I USE ANY REFUSE CAN AS A SECONDARY REFUSE CART?

No. Only a refuse cart purchased from Priority or the City's previous vendor will be serviced. You can purchase another Priority refuse cart by selecting Sterling Heights, MI in the drop down menu at prioritywaste.com/waste-recycle-bin-order-form/ or calling us at 855-WASTE-65 (855-927-8365).

I ONLY NEED ONE REFUSE CART AND DO NOT HAVE SPACE FOR MY OLD CAN. WHAT SHOULD I DO WITH MY OLD ONE?

Priority will collect and dispose of old cans you do not need. Simply place the empty can upside down at the curb, with a note taped to the cart or a RED X so we know it is okay to throw away. Please place any unwanted cans at the curb once Priority begins servicing the City starting May 1, but please consider not putting all your old containers out on the first Week of Priority Waste service so they can space out the collection.



Refuse Collection News

Do



- ✓ Begin using your new refuse cart on your regularly scheduled collection day, on or after May 1, 2024.
- ✓ Make sure your refuse cart is out and ready for collection by 7 a.m. on your regularly scheduled collection day.
- ✓ Make sure the refuse cart lid is closed to avoid littering and rodent access.
- ✓ Take your refuse cart in as soon as possible after it has been emptied.
- ✓ Place carts at the curb with lid opening facing toward the street.
- ✓ Make sure carts are at least three feet away from each other, vehicles and mailboxes
- ✓ Leave your refuse cart with the property if you move to a new address.

Don't



- ✗ Don't leave loose bags alongside the refuse cart. **No additional refuse bags will be collected.**
- ✗ Don't put loose trash inside your cart. **All refuse in the cart must be bagged.**
- ✗ Don't put yard waste of any kind, including rocks and soil, in your refuse cart.
- ✗ Don't place your refuse cart underneath overhead obstructions like tree branches.



sterlingheights.gov/onaroll | 586.446.2440

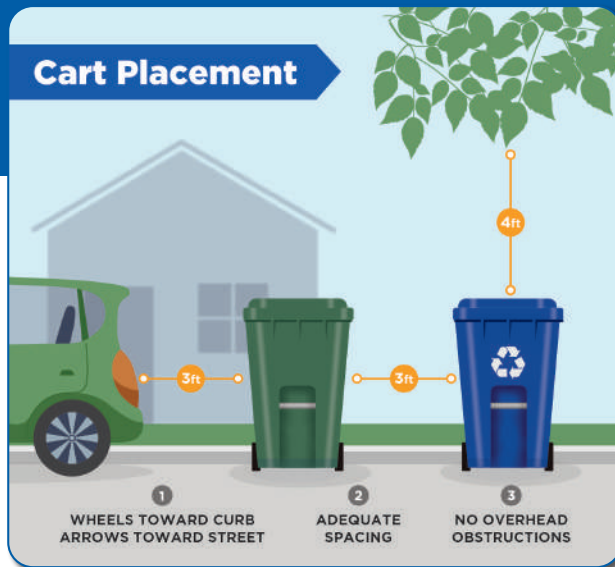
Remember!
MAY 1
2024
BEGIN USING
PRIORITY WASTE
REFUSE CART

sterlingheights.gov/onaroll



SCAN FOR
MORE INFO

Cart Placement



DPW Director - Michael Moore

CITY COUNCIL

Michael C. Taylor
Mayor

Liz Sierawski
Mayor Pro Tem

Deanna Koski
Councilwoman

Michael V. Radtke Jr.
Councilman

Maria G. Schmidt
Councilwoman

Henry Yanez
Councilman

Barbara A. Ziarko
Councilwoman

Mark Vanderpool
City Manager

